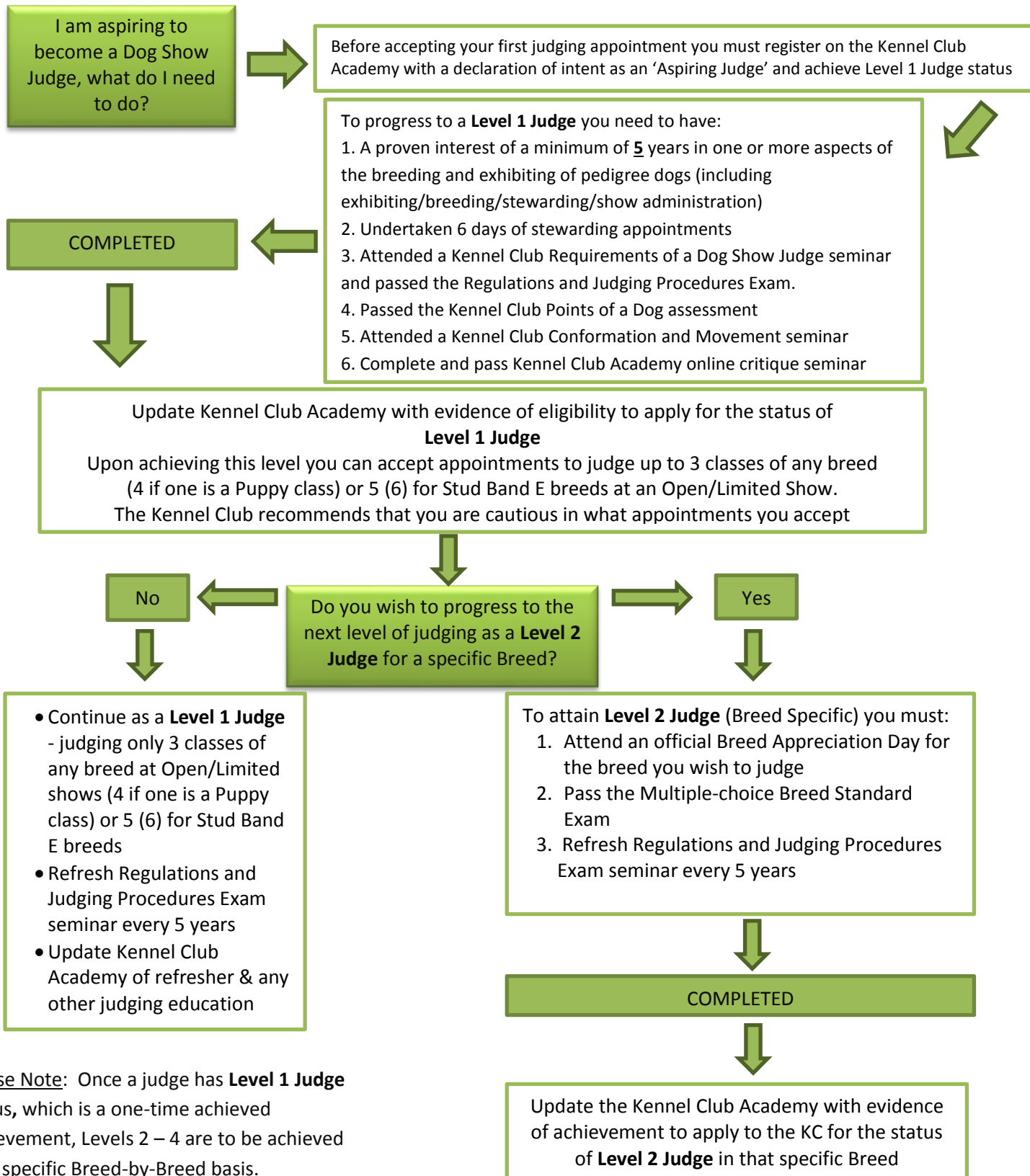


Kennel Club Step-By-Step Guide to becoming a Challenge Certificate Judge



Please Note: Once a judge has **Level 1 Judge** status, which is a one-time achieved achievement, Levels 2 – 4 are to be achieved on a specific Breed-by-Breed basis.

It is, therefore, feasible for a Judge to be at different levels in different Breeds at the same time.

Kennel Club Step-By-Step Guide to becoming a Challenge Certificate Judge

Now that you have attained **Level 2 Judge** status for a specific breed you can judge:

- Unlimited number of classes in that breed at an Open/Limited show and a Championship Show without CCs
- No more than 3 classes (4 if one is a Puppy class) of any other breed or 5 (6) for Stud Band E breed at an Open/Limited Show
- Any Variety Best in Show at Limited Show

Do you wish to progress to the next level as a **Level 3 Judge (Awaiting Final Assessment)**?

No

Yes

Continue as a **Level 2 Judge**, able to judge:

- Unlimited number of classes in that breed at an Open/Limited shows and a Championship Show without CCs
 - AV Best in Show at Limited shows
- AND

As a **Level 1 Judge**:

- No more than 3 classes (4 if one is a Puppy) of any other breed or 5 (6) for a Stud Band E breed at an Open/Limited show
- ALSO
- Refresh Regulations and Judging Procedures Exam seminar every 5 years
- Update Kennel Club Academy of refresher & any other judging education
- Undertake further experience in the breed and apply for **Level 3 Judge (Awaiting Final Assessment)** when ready

To attain **Level 3 Judge (Awaiting Final Assessment)** - Breed Specific you must:

1. Pass the Kennel Club 'Eye for a Dog' assessment
2. Undertake three 1:1 mentoring sessions within that Breed
3. Have one approved observations of judging with a meaningful entry present.
4. Have bred and or owned a minimum of 3 dogs when the obtained their first entry in the KC Stud book - save for exceptional circumstances. (This is a one-time qualification)
5. Attended the appropriate sub-group Field Trial event for gundog breeds or Ring Procedure at licensed shows (German Shepherd Dog) online exam
6. Refresh Regulations and Judging Procedures Exam seminar every 5 years

COMPLETED

Update the Kennel Club Academy with evidence of achievement and apply to the KC for the status of a **Level 3 Judge (Awaiting Final Assessment)** for that specific breed

Kennel Club Step-By-Step Guide to becoming a Challenge Certificate Judge

Now that you have attained **Level 3 Judge (Awaiting Final Assessment)** in a specific breed you can continue to judge the following whilst waiting to be assessed:

- Unlimited number of classes in that breed at an Open/Limited show and a Championship Show without CCs

AND

- No more than 3 classes of any other breed (4 if one is a Puppy) or 5 (6) for Stud Band E breeds as a Level 1 Judge at an Open/Limited Show

